

Acquisition of computing literacy on shared public computers: children and the “hole in the wall”

Sugata Mitra, Ritu Dangwal, Shiffon Chatterjee, Swati Jha, Ravinder S. Bisht and Preeti Kapur

Centre for Research in Cognitive Systems
NIIT Limited
Synergy Building
IIT Campus
Haus Khas
New Delhi 110016
India

Webmaster's e-mail: himanshut@niit.com
Website: www.niitholeinthewall.com

Abstract

Earlier work, often referred to as the "hole in the wall" experiments, has shown that groups of children can learn to use public computers on their own. This paper presents the method and results of an experiment conducted to investigate whether such unsupervised group learning in shared public spaces is universal. The experiment was conducted with "hole in the wall" (minimally invasive education, or MIE) computers in 17 locations in rural India. Focus groups in each location were tested for computer literacy for 9 months.

Results, which are discussed in the paper, show that groups of children can learn to use computers and the Internet on their own, irrespective of who or where they are.

It is further observed that such group self-instruction is as effective as traditional classroom instruction. At the same time, such learning is considerably less expensive and independent of teachers and schools.

The results point to a new pedagogy for children's education in those circumstances where schools and teachers are either absent or not effective due to any reason.

Introduction

Current research on computers in education is, generally, on the influence and consequences of computers in the school settings that are characterized by direct instructional methods of the last century. These methods are effective in structured teaching systems where all students try to achieve a common goal. These methods consist of drill, practice, fixed ways of assessment, rote memory, passing

on of established knowledge areas to students and examinations. While these methods are effective in the hands of good educators and schools, they have severe limitations of scalability and quality. Good schools are expensive, unviable and difficult to build in remote areas. Good teachers of computers and Information Technology are unlikely to exist or move to rural and other remote areas. Good teachers are rare and expensive and this trend is likely to continue. At the same time, computers are, and will continue to be, more functional, cheaper and faster. It is necessary to assess how computers, as a pedagogic mechanism, can help provide equal opportunity and the required context to children from all types of socioeconomic and cultural backgrounds to learn and achieve basic levels of literacy and education.

The present paper is about the acquisition of computer literacy in children in the age group of 6-14 years, it puts forward the following hypothesis, *‘if given appropriate access and connectivity, groups of children can learn to operate and use computers with none or minimal intervention from adults’*.

The paper is in two sections:

- It evaluates the results of experiments carried out in 17 locations all over India, where 48 computers have been placed in urban slum and rural India. Findings indicate that computers can play an effective role in ensuring equal learning opportunity for the less advantaged children, thereby impacting the socio-economic development of any country in the world.
- It compares the computer literacy of self-taught children to students who gain formal computer education by conventional and structured classroom, teacher centric instruction delivery systems.

The “hole in the wall” and Minimally Invasive Education

Many studies indicate that children benefit from exposure to computers as they use it for multiple purposes. Clement (1999) observed that computers give children opportunities that cannot be offered in the physical world. In other words, technology offers children unique intellectual experiences and opportunities. Children have the opportunity to complete a given task on their own thus they have the chance to develop their thinking skills (Papert, 1980).

Minimally Invasive Education (MIE) is a pedagogic method, and derives its name partly from the medical term minimally invasive surgery (Mitra and Rana 2001, Mitra 2003). The idea of MIE crystallized over a period of time based on observations and educational experiments conducted at NIIT. The experiments were first conducted in Kalkaji, a suburb of New Delhi, India. A computer was connected to the Internet and embedded into a brick wall near a slum. The media often describes this experiment as “the hole in the wall”. It was reported that most of the slum children were able to use the computer to browse, play games, create documents and paint pictures within a few days. Thus, it was observed that, even in the absence of any direct input, mere curiosity led groups of children to explore, which resulted in learning. This, coupled with minimal input from peers, or from anyone familiar with computers, helped the children learn more.

This leads us to believe that any learning environment that provides an adequate level of curiosity can cause learning among groups of children. Children's desire to learn, along with their curiosity and peer interaction, drives them to explore the environment in order to satisfy their inquisitiveness. As the children explore their environment, they relate their new experience with their previous experience and thereby new learning takes place (*Frontline World 2002, Education Guardian 2000, Businessweek Online 2000, Mitra 2000, Mitra 2003 and Wullenweber 2001*). Hence, we define MIE as a pedagogic method that uses the learning environment to generate an adequate level of motivation to induce learning in groups of children, with none or minimal intervention from a teacher. In MIE, the role of the

teacher is limited to providing, or guiding learners to, environments that generate adequate levels of interest. A known example of MIE is the type of learning that takes place when an appropriate puzzle is given to children with little or no input from others. The computer itself is capable of generating such intervention from time to time.

The original hole in the wall of 1999 has evolved into a brick structure with computers embedded in it. In the rest of this paper we will refer to this arrangement as "Minimally Invasive Education Learning Stations" (MIE learning stations). These have been set up in 22 rural and urban locations across India and similar results are reported through field observations as well as through a GUI Icon Association Inventory test (Mitra 2003) administered to children. Observations across locations show a learning process of random exploration, collaboration, discovery, vocabulary construction, generalization, practice and peer tutoring (Inamdar, P. (2004).

Minimally Invasive Education (MIE) is based on a paper (Mitra, 1988) that speculated that children can learn to use a computer on their own. Empirical research for five years (Mitra, 1999; 2000, 2001, 2003, 2004) substantiated this speculation. It is an approach that promises to bridge the "digital divide" by helping diverse populations achieve computer literacy. MIE is also a concept of important consequences to the area of education in general "Minimally invasive" refers to the least possible, negligible, or the minimum help required by the child to initiate and continue the process of learning basic computing skills. This minimal amount of help from other children at the MIE learning station is necessary and sufficient for the children to become computer literate. This "help", which is the fundamental aspect of MIE, could be from peers, siblings, friends, or any other child familiar with computers. Children are found to collaborate and support each other. The learning environment is characterized by its absence from adult intervention, openness and flexibility. Children are free to operate the computer at their convenience, they can consult and seek help from any other child/children, and are not dictated by any structured settings. It is observed that children tend to rely upon themselves to generate the necessary learning environment, and to organize themselves for learning. It is to be noted that MIE learning stations are located in safe, open public spaces and are easily accessible to children. They have been designed for use by children (Mitra 2004).

MIE experiments are located in urban slum and rural India. This has resulted in a design for MIE learning stations that address issues of access to technology, financial resources, and cost constraints. India has problems of poverty, illiteracy, inadequate infra structure, diversity of socio-cultural communities, of varied socio-economic status, spread over a large geographical region.



Figure1: A MIE learning station at Village D.Salhundi, Karnataka, India.

MIE experiments clearly indicate that children are able to learn to use computers and the Internet on their own, irrespective of their social, cultural or economic backgrounds (Mitra and Rana, 2001, Mitra 2004). The diversity of Indian conditions is, ironically, useful for applying these results anywhere in the world.

Present study

Salient features of children at MIE learning station

The 22 locations where MIE learning stations exist range from the Himalayas to the tip of the Indian peninsula (North to South) and from the Rajasthan deserts to the Ganges Delta (West to East). Of the 22 locations studied in India, children frequenting MIE learning stations are in the age range of 6-14 years, with a mean of 10-11 years. Majority of these children study at the elementary school level (below grade 8). Most are students of government schools. They come from diverse ethnic and cultural backgrounds, and have different first languages such as Hindi, Tamil, Kannada, Marathi, and Bengali. Most have a rudimentary understanding of the English language. They are typically Hindus, Muslims, and Christians. Within a given community, as is often the case in rural India, they are differentiated by caste.

The background of the parents is equally diverse; from daily wage labour to farmers, shop owners, auto-rickshaw drivers, working in cottage industries or in a government organization etc. Men are found to be more educated (8th grade), while the women are mostly illiterate.

In order to study the impact of MIE learning stations on computer literacy amongst children, we have considered experimental or focus groups, frequent users and control groups from different states. We have clubbed the states into four zones, each zone consisting of a particular state.

South Zone	2 States – Karnataka & Tamil Nadu
North Zone	3 States – Uttaranchal, Jammu & Kashmir, Uttar Pradesh
East Zone	1 State- West Bengal
West Zone	2 States – Rajasthan & Maharashtra

- a. **Experimental or focus groups** – 15 children from each location (except for one location, where the experimental group consisted of 10 children) were selected randomly to be part of this group. For this study, the experimental (focus) group consisted of a total of 250 children from 17 locations. The Icon Association Inventory (IAI), a measure of computer literacy (Mitra 2003, 2004 and described below) was administered at regular intervals to the focus group.
- b. **Frequent users** –This group consisted of 250 children from all the 17 locations and the IAI was administered on them, only in the ninth month, the last month of measurement. These children visit the MIE learning station frequently but are not part of the focus group. Measurements on this group was made in order to check whether the focus group scores have any bias due to test familiarity (the Hawthorne effect).
- c. **Control groups** -. Control groups are selected from nearby villages with similar socio-economic features as the experimental group’s village. A total of 119 children (7 children per location) were selected for this study. These groups did not have access to MIE learning stations or to any other computers. We did not test the control group until at the end of the experimental period. This is important because computers generate such curiosity amongst children that even a hint of a nearby computer would encourage children to visit the MIE learning stations or other places where they may encounter computers.

Students following other learning systems

It is necessary to compare the results of children exposed to MIE learning stations with those of others who learn to use computers in other, more traditional, ways. We selected two groups of such learners:

- a. The first group of traditional learners was of the same age group as MIE students, but enrolled as regular students in a school. They are taught computers in the classroom setting, with a prescribed curriculum along with computer laboratory facilities. The medium of instruction was English and the Central Board of Secondary Education (CBSE) prescribes the syllabus. The CBSE is a government body that decides the curriculum for primary and secondary education in Indian government schools. Computer education is an integral part of their formal curriculum and professionally trained teachers teach the course. For our study, 50 students in the age range from 10 to 13 years were randomly selected from the sixth grade of the Delhi Police Public School located in New Delhi, India. Of these, 35 students were finally assessed over a period of

5 months. The balance 15 children left the school due to transfer of parents, or were absent on the days when assessment was done.

- b. The second group of traditional learners were students enrolled for a one-year Diploma in Information Technology (DIT hereafter) at an NIIT Centre in New Delhi. NIIT is predominantly an education company and operates over 3000 education centres in 26 countries. These students were engaged in rigorous training on the fundamentals of computers as well as on certain programming languages. The content of the DIT course is varied and is taught by skilled professional Instructors. The pedagogy is “highly invasive” wherein the instructor follows instructions in structured and prescribed courseware followed by structured sessions in a computer lab. We selected a new batch of students and measured their IAI scores over a five month period. There were 27 students in the batch with an ages ranging from 18 to 21 years. Most of the students were enrolled in college and some of them had already completed graduation. This group of students were older in age, educationally more qualified and had access to state-of-the-art technology.

The Icon Association Inventory

The experimental design (to be described in detail below) consisted mainly of periodic tests for computer literacy amongst focus groups of 15 children at each location over nine months. In order to do so, a test was required that could be:

1. Administered outdoors, since many locations did not have a facility where indoor testing could be conducted.
2. Administered in a short period of time, since it is difficult to assemble and retain the focus groups in outdoor environments for more than 30 minutes at a time.
3. Evaluated in a short time by different evaluators, since the number of tests to be evaluated were relatively large (around 300 results every month).
4. Administered and evaluated using paper and pencil alone, since other facilities or equipment may not be available at field locations. Also, we decided to have the test results sent to a central location (New Delhi) for evaluation by a group of trained evaluators to ensure consistency of evaluation.

We could not find a test meeting these conditions and decided to develop one. While the design and validation of this test will be described in detail elsewhere, include below a brief account of the procedures we used to develop and validate the test.

In order to develop a test for computer literacy, we started with children who had taught themselves to use computers at some of our earliest playground facilities (Mitra and Rana, 2001). These children had developed their own vocabulary to describe icons in the Microsoft Windows environment. For example, they referred to the mouse cursor as “teer” or “sui”, Hindi words for arrow and needle, respectively. The folder symbol was described as a cupboard for keeping other objects. While the words used to describe the icons were chosen from their own language and experience, their description of the functionality of the icons were accurate.

We then constructed a list of the 77 icons present in the Microsoft Windows and Microsoft Office environment. The test (see Figure 2) consisted of a list of these common computer GUI (Graphical User Interface) icons and persons taking the test are asked to describe the purpose of each icon. It is assumed that the number of correct descriptions of icons is correlated to the IT literacy level of the person taking the test. We decided to test this assumption.



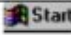


Name:	Age:
Class:	Gender:
Here are some pictures that resemble the pictures on the computer. Look at each picture carefully and describe in few words its function.	
	
	
	
	
	

Figure 2: The GUI Icon Association Inventory, sample layout

Not all persons who are adept at using computers use icons. Indeed, many users do not use icons at all but prefer to use drop-down menus instead. It would, therefore, appear that the ability to identify the function of an icon may not correlate well with the ability of a respondent to use a computer.

We selected 74 users of computers in an urban environment and administered the IAI. These users were people who used the standard functions of MS-Windows and MS-Office such as word processing, spreadsheets, e-mail and so on. They consisted of a heterogeneous group of office administrative staff, students of Information Technology, research assistants and faculty. All were competent and experienced users.

The average score obtained was 49%, with a standard deviation of 18%. The maximum score obtained was 76%, while the minimum was 7%. The results seemed to indicate that users, irrespective of whether they used icons or not, could guess the function of an icon provided it was from software that they used frequently. For example, a secretary who uses a word processor often would be able to guess the function of the icons of word processing correctly, while, if his job does not involve using spreadsheets, would not be able to guess the functions of the icons used in spreadsheets.

Next, we identified two frequent users (Pawan, age 16 and Lalit, age 12) in a slum area of New Delhi, and asked them to study the icons, and write down their descriptions. These independent descriptions were then matched for consistency.

We then asked the two children to work together to resolve any inconsistencies and also describe the functions of the icons they had been unable to, when working independently. Over a period of a week they developed descriptions of most the icons they were shown.

The children could not identify the functions of the icons used in the spreadsheet program, MS-Excel, because this program was not available to them. This was done to check whether they could arrive at a correct functional description of an icon using guesswork and reasoning alone.

At the end of this exercise, we matched the descriptions provided by the children with the descriptions given in the Windows and Office “Help” files.

Finally, we developed a scoring key for the IAI that listed the ‘correct’ descriptions for each of the 77 icons. An evaluator would compare these descriptions with those provided by a user in response to the test, and make a subjective evaluation of how closely the two matched for any icon and decide whether to award a correct score for that item.

We then administered the test to 9 children in Madangir, a slum area in New Delhi. These children had been exposed to playground computers for 15 days. The results showed that frequent user of computers took less time and identified more icons correctly than others.

It now became necessary to investigate two aspects of the test:

1. The evaluation of the IAI is dependent on the subjective judgment of the evaluator in deciding whether a child’s description of the function of an icon is adequately close to that given in the evaluation key. We need to find out if such subjective evaluation is sufficiently close to any other objective evaluation, so that the subjective evaluation method can be considered accurate.
2. Whether a score in the IAI, for instance 7 correct identifications out of 77, is a good measure of the computer literacy of the child concerned as compared with his score in any other, standard, test of computer literacy.

The IAI contains 77 icons and requires about 30 minutes to complete and about 10 minutes to evaluate. Since the evaluation is both subjective and time consuming, an automated version of the test (see Figure 3) was developed by Batra, Dangwal and Inamdar (NIIT 2003, unpublished). This test consists of the same 77 icons as in the IAI, along with 4 multiple-choice answers to describe each icon. The test is administered on a computer and then evaluated automatically. This eliminates any subjective element in the evaluation. We will call this software version of the IAI, the IAI-S

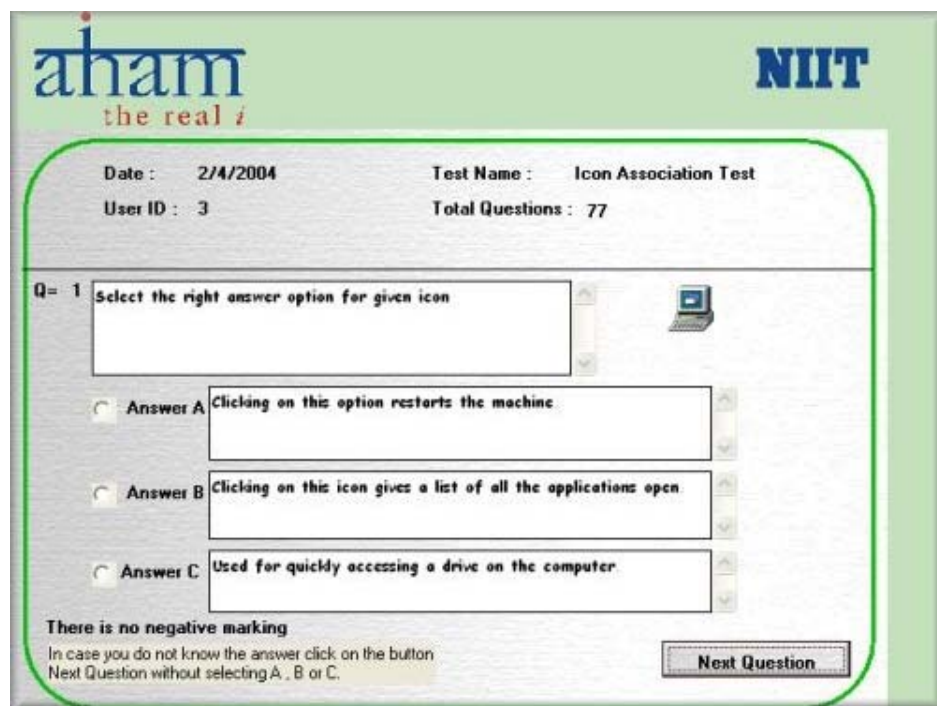


Figure 3: The GUI Icon Association Inventory Software, a sample screen

It is to be noticed that while the IAI-S is an objective method for administering the IAI, its use is restricted to urban, English-speaking populations, where computers are available to all respondents.

A task based computer literacy (TBCL) test (see Figure 4) has been devised by “Outreach and Extension”, University of Missouri and Lincoln University, USA (<http://outreach.missouri.edu/fcrp/evaluation/computerskills.htm>). This test consists of tasks that a person is asked to perform on a computer and its subsequent evaluation.

[TASK-BASED COMPUTER SKILLS ASSESSMENT INSTRUMENT	
Evaluator Name _____	Note: Check <input type="checkbox"/> the blank for successfully completed tasks and place an X in the blank for tasks that are not completed successfully
Participant Name _____	
Participant Age and Grade _____	Date _____
Skill Area 1: Basic Computer and Operating System Skills	
_____	Skill Set 1.1: Identifying basic components of the computer
_____	Step 1: Identify the CPU [main part of the computer]
_____	Step 2: Identify the keyboard
_____	Step 3: Identify the mouse
_____	Step 4: Identify the monitor
_____	Step 5: Identify the printer
_____	Skill Set 1.2: Turning on the computer, opening a program, using the mouse
_____	Step 1: Turn on the computer
_____	Step 2: Open the Internet Explorer program
_____	Step 3: Exit the program

Figure 4: Task-based computer skills assessment test. Some sample questions.

As such, the TBCL test is a literal test of computer literacy. It takes over an hour to complete the test and about 30 minutes to evaluate the results. While we could not find a validation study on the TBCL, we decided that the results of this test were a good benchmark for evaluating the effectiveness of the two versions of the IAI. This decision was based on the fact that a literal test, such as the TBCL, is close to how examinations are conducted in schools, and should be a good measure of actual performance.

It is important to mention here that we could not find a validated computer literacy test to measure the IAI against. Hence, we had to rely on the self-consistency of the IAI to establish its validity.

We administered three tests, namely, the IAI, the IAI-S and the TBCL to a group of 18 students (all young adults) enrolled for a course in IT skills. These students consisted of an entire, randomly chosen, “batch” of students taking these courses in a traditional computer training institute in New Delhi. There were 9 men and 9 women in the sample.

The results, to be reported in detail elsewhere, showed all three tests results to be highly correlated (in the region of 0.95 with a very low probability of error).

We concluded that the GUI Icon Association Inventory in either of its two versions is an effective instrument for measuring computer literacy.

The measurement of computer literacy of children at MIE learning stations was, therefore, done using the Icon Association Inventory, a test created and validated for this purpose.

Of the 77 icons in the IAI, 26 icons (in the Excel and Text Format categories) are not present in the computers as configured for use by children at MIE learning stations. Measurements were, therefore, carried out using 51 of the 77 icons. The children are also tested on the remaining 26 icons, as a check of the effectiveness of the IAI in measuring computing skills (there should be an uniformly low score on these icons throughout the testing period).

Measurement Schedule of the IAI

The IAI was administered to all the three groups- children at MIE learning stations, traditional learners in school and students pursuing professional training in Information Technology (DIT), in the following manner.

Figure 5: Time intervals for testing

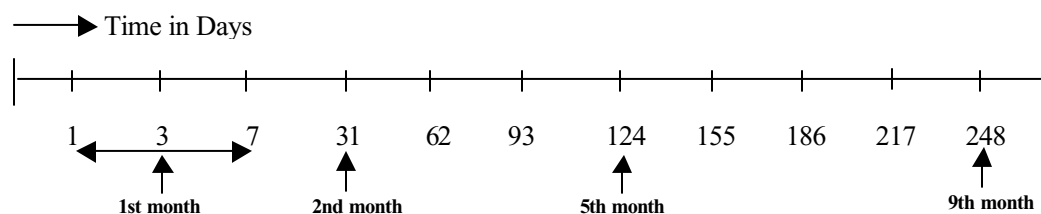


Figure 5 shows the time intervals at which the IAI was administered. It was administered for the first time on the day the MIE learning stations were commissioned for the village children. For the other two groups of formal learners it was first administered on the day of the start of the respective courses. The test was then administered on the 3rd day, the 7th day and every 30 days for a nine month period. The total duration of the testing spanned 248 days, as shown in the figure.

Due to unavoidable circumstances, data for students pursuing professional IT course (DIT) could be collected for a period of 8 months and for the regular school students, 5 months.

Results

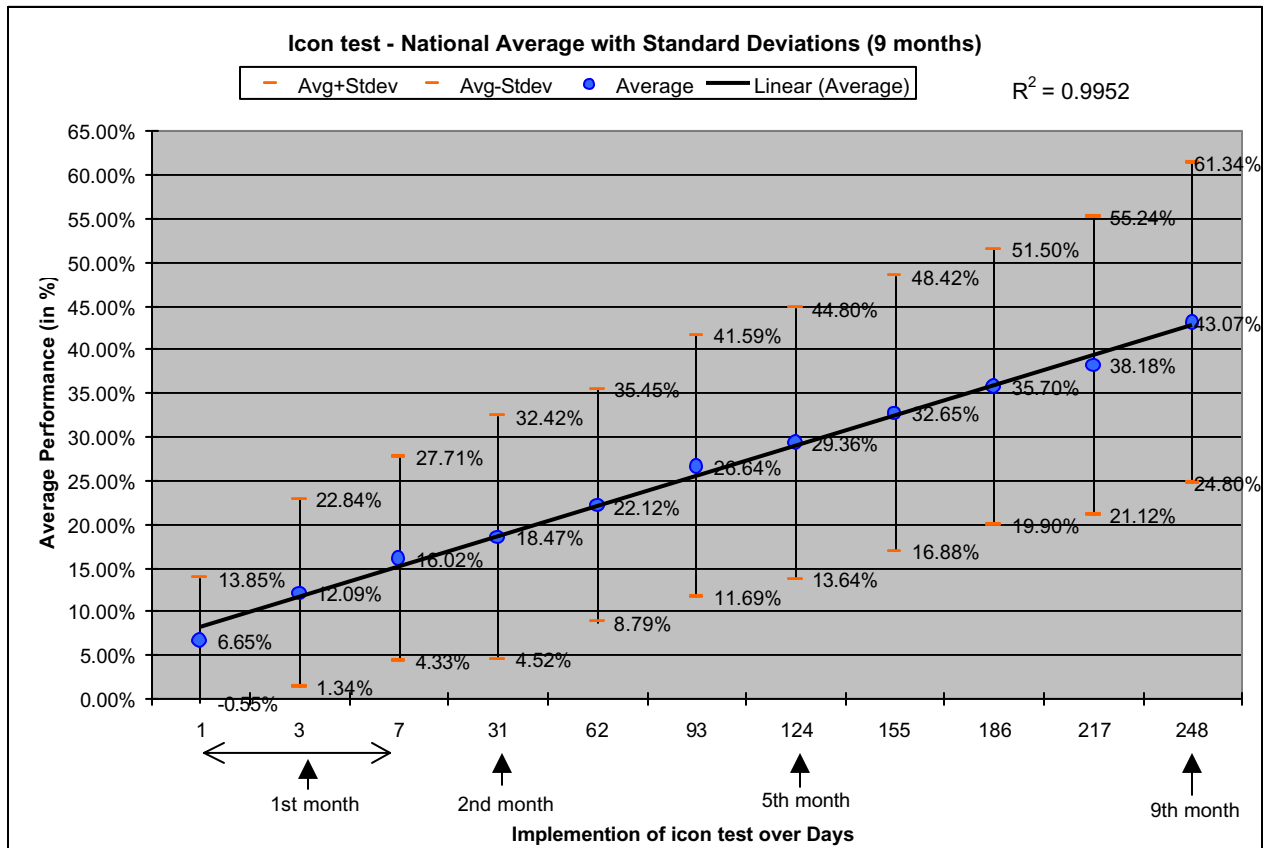
We report the results in two sections. The first section reports the results of the measurements on children using MIE learning stations in 17 locations. The second section reports the results of the measurements on the two learner groups in New Delhi, namely, school students and students at NIIT.

Section I

MIE Learning Station Users

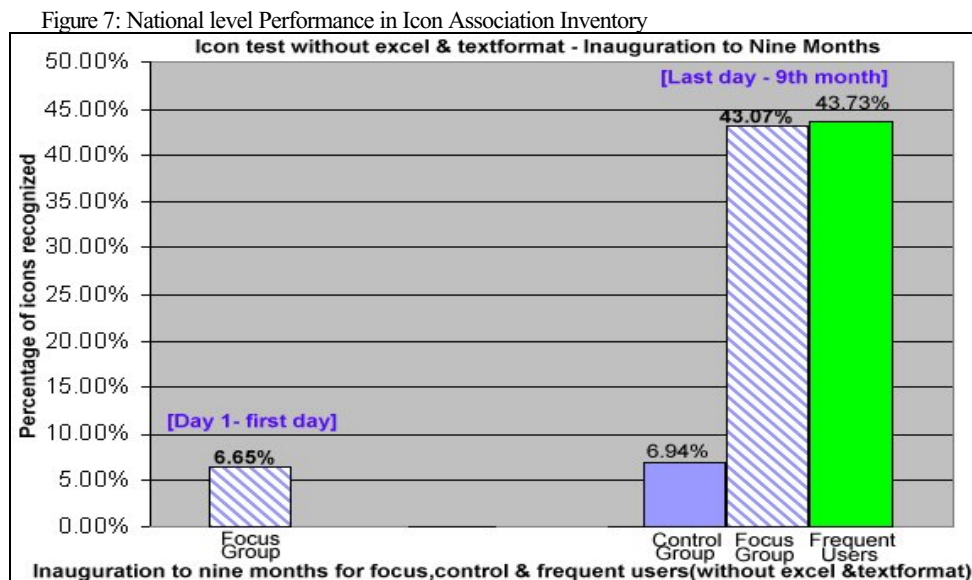
Figure 6 shows the learning curve for children using MIE learning stations.

Figure 6: National level - Performance of MIE LS users in Icon Association Inventory



The average scores increased from 6.65% to 43.07% over the experimental period of nine months. A high standard deviation is observed throughout. Indeed, this high standard deviation is observed at all individual locations as well.

Figure 7 compares the average scores for the focus, control and frequent user groups over the experimental period.



The focus group score is seen to rise from 6.65% to 43.07% while the control group score on the 9th month is seen to be 6.94%. The frequent users score an average of 43.73% in the ninth month. We observe that:

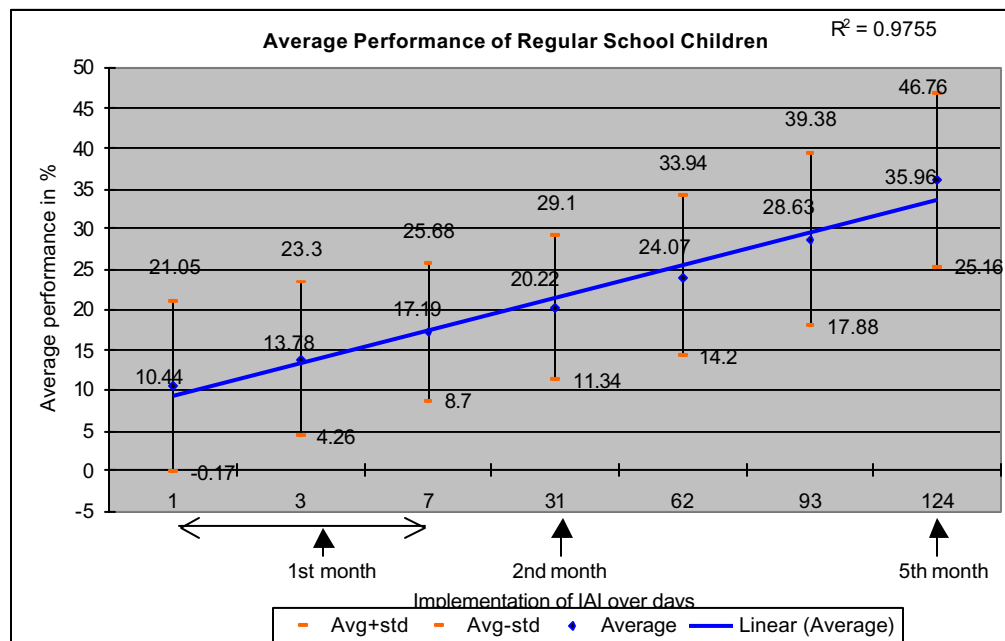
- There is a significant difference in the performance of the experimental (focus) group on the day of inauguration as compared to their performance on the 9th month.
- There is a significant difference in the performance of the experimental (focus) group and the control group in the ninth month.
- There is negligible difference between the focus and frequent user group scores in the ninth month. The Hawthorne effect has not been observed.
- There is a significant difference between the Control group and the frequent users group scores in the ninth month.

Section II

Results from formal learning systems

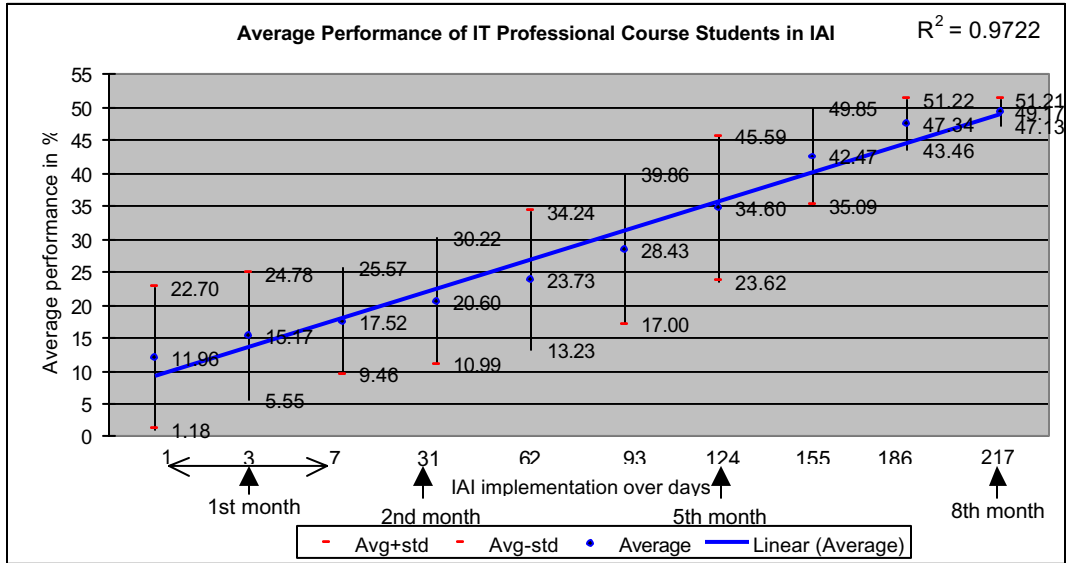
- a. Regular/Conventional school Children -** The data for this group is available for 5 months. Figure 8 shows the performance in the IAI (without excel and text format icons). It is seen that the IAI average scores rise from 10.44 to 35.96 in the first five months.

Figure 8: Performances of Regular School Children in Icon Association Inventory



- b. Students of a professional IT course –** The data for this group is available for 8 months. Figure 9 shows the performance in the IAI (without excel and text format icons). It is seen that the IAI average scores rise from 11.96 to 49.17 in the first eight months.

Figure 9: Performances of Professional Course Students (DIT) in Icon Association Inventory



Discussion

Table 1.0 Comparative analysis of the general attributes, learning environment and cost for the three groups studied

a) General attributes of the three groups studied

	MIE learning stations	Regular School	IT Professional school
Age	Ranging from 7 - 14 years. Average age 10-11 years	Ranging from age 10-13 years	Ranging from 18 – 21 years
Gender	Males and Females	Males and Females	Males and Females
Background	Majority from economically weaker sections	Lower to middle income groups	Middle to upper income groups
Education	Primary to middle	Middle	Under graduates to graduates. [All students have completed 12 th grade]
Access to computers	Shared Public MIE learning stations	Classroom instruction and computer lab	Classroom instruction and computer lab
Assessment	Through the IAI	Assignments, exams-theory, practicals and projects. IAI	Assignments, projects, Assessments and practicals. IAI
Teaching Method	Self, Collaborative, little or no intervention from adults	Teacher dependent approach	Faculty dependent approach
Time Spent	No time restriction	2.5 – 4 hours per week	6 hours per week

b) The Learning Environment

	MIE Group	Regular School	IT Professional group
--	------------------	-----------------------	------------------------------

Context	Shared public MIE learning stations	Classroom instruction and computer laboratory	Classroom instructions and computer laboratory
Access to computers during working hours	<ul style="list-style-type: none"> - On an average, the usage is between 10am-4 pm [MIE learning stations remain open from 9am -5.30pm, beyond which they are shut down] - no time restriction , children can access computers as long as the learning station is open - accessible to all children - visit MIE learning station before going to school or on return or on holidays, nearly the whole day 	<ul style="list-style-type: none"> - 2.4 – 4 hours per week - attend class at fixed time - accessible only to students of a given class 	<ul style="list-style-type: none"> - 6 hours per week - attend class at fixed time - accessible only to students of allotted batch
Teaching Method	<ul style="list-style-type: none"> - children organize themselves into small groups. Each child is both student (learns from others) and teacher (teaches children who have less knowledge than him/her). Hence, student-teacher boundaries are blurred. - peers, siblings, friends& others -absence of adult intervention -absence of formal teaching 	<ul style="list-style-type: none"> - teacher centric approach - entire class taught by one teacher - children not allowed to interact or consult each other during class time. 	<ul style="list-style-type: none"> - teacher centric approach - faculty dependent - entire class taught by one teacher - students not allowed to interact or consult each other during class time.
Qualifications	Mainly primary school children	Teachers are professionally trained and qualified and have teaching experience	Teachers are professionally trained and qualified and have teaching experience
Learning methods/strategy	Mainly collaborative learning through the methods of observation, modeling, trial & error & self discovery	Individual based learning	Individual based learning
Assessment/ Evaluation	No evaluation except IAI which is not seen as assessment. No examination.	Assignments, tests and final examination for both theory and practicals, and projects	Assignments, periodic assessment and practicals. Final examination.

c) Cost of learning (1 US\$= Rs. 44, April 2005)

MIE Group	Regular School	IT Professional group
Rupee 1 per child per day, based on an estimate of an average of 200 children using each learning station. Annual cost Rs. 365/- per child	Rs. 1250/- per month per child Annual cost Rs. 15000/-	Rs. 17000/- per semester per student. Annual cost Rs. 34000/-

Table 2.0 Comparative analysis of performance on IAI for the three study groups: MIE learning station users, regular school students and IT Professional course students

	MIE Group	Regular School	IT Professional group
Inauguration (1st day)	6.65	10.44	11.96
3rd month (62 days)	22.12	24.01	23.73
5th month (124 days)	29.36	35.96	34.6
8th month (217 days)	38.18	Not available	49.17

Table 1.0 provides a comparative analysis of the three groups on the basis of general attributes, learning environment and financial costs. There is a significant difference in the age ranges of MIE learning station users and Regular School Students (10-11years) versus IT professionals (18-21 years). Also, the MIE learning station users are from an economically disadvantaged group in contrast to the other groups.

Regarding the learning environment in which all the three groups accomplish computer literacy, the differences between MIE learning station users and others is significant. The learning method used by MIE learning station users, draws upon the expertise of peers, siblings and friends. Each learner is both a learner and a trainer.

Table 2.0 provides the performance on IAI for the three groups studied. The MIE learning station users begin at the lowest level of performance – 6.65%, in comparison to regular school students (10.44%) and the IT professional course students (11.96%). By the third month, the three groups are at par. By the eighth month, the IT professional group of students stands at 49% in comparison to MIE learning station users at 38.18%. So, the IT professional group of students performed the best, to begin with, which was perhaps not surprising, given their background. However, the other groups caught up with them by the eighth month. In this connection, it may be noted that office secretaries score between 30% and 50% in the IAI, as seen from an independent (as yet unpublished) study.

The unstructured, open and flexible environment of the MIE learning station seems to produce comparable levels of computer literacy amongst learners as compared to formal methods. It does so at a considerably lower cost.

Conclusions

We conclude that groups of children can learn to use computers on their own, irrespective of who or where they are. This will happen if computers are provided to them in safe, public locations.

This method of acquisition of computer literacy does not depend on the existence of schools or teachers. It is also considerably less expensive than traditional methods of computer education. Therefore, in those circumstances where schools and teachers are absent, MIE learning stations are an adequate substitute. Places affected by natural disasters, such as the recent Tsunami in the Indian Ocean, or places affected by war, such as Afghanistan or Iraq, or places affected by economic or social problems such as poverty or HIV/AIDS in Africa are likely to benefit quickly and reliably through such self-learning methods.

While this paper is about the acquisition of computer literacy, there are indications that MIE learning stations produce other changes in children’s social and educational achievements. Such changes (Inamdar, 2004, and others to be published) are described elsewhere.

Acknowledgements

An experiment of this nature involves many people, much traveling, data analysis and discussion. Special acknowledgements are due to Vikram Kumar, Dinesh Mehta, Nitin Sharma, Ashoo Dubey, and the 17 field observers at the villages. It is with their help that the villages were identified and the learning stations constructed. Sanjay Gupta, Vivek Rana, Meera Dutta, Himanshu Tayal and Shailender Minz's contributions to the hardware and software development aspects of the experiment were invaluable to the development of the learning stations. We wish to acknowledge the contributions of Marmar Mukhopadhyay (NIEPA), Kenneth Kenniston (MIT), Bruno Bondet de la Bernardie (IFC), Anil Inamdar (The Aquarians), Manas Chakrabarti and Suneeta Kulkarni (Soham), in advising the research effort.

Financial assistance from the International Finance Corporation, the Government of Delhi, the ICICI bank and NIIT Limited is gratefully acknowledged.

References

Bathla, G (2002); Self-development through collaborative learning: A constructivist approach, an unpublished project report, D.R College, University of Delhi.

Cappelle Van F, Evers, V, & Mitra S (2004): Investigating the effects of unsupervised computer use on educationally disadvantaged children's knowledge and understanding of computers. Proceedings of CATaC 2004, Karlstad, Sweden, (www.it.murdoch.edu.au/catac)

Clement, D.H. (1999) "Young children and technology", In Dialogue on early childhood science, mathematics and technology education. Washington D.C: American Association for the Advancement of science Project 2061.

Inamdar, P. (2004): Computer skills development by children using 'hole in the wall' facilities in rural India. Australasian Journal of Educational Technology, 20(3), 337-350.
<http://www.ascilite.org.au/ajet/ajet20/inamdar.html>

Mitra Sugata (1988), A computer assisted learning strategy for computer literacy programmes. presented at the Annual Convention of the All-India Association for Educational Technology, December 1988, Goa, India.

Mitra, Sugata (2000), Minimally invasive education for mass computer literacy, presented at CRIDALA 2000 Conference, Hong Kong, 21-25.

Mitra, Sugata & Rana, Vivek (2001): Children and the Internet: experiments with minimally invasive education in India. British Journal of Educational Technology 32 (2), 221-232.

Mitra, S, Minimally Invasive Education (2003): A progress report on the "Hole-in-the-wall" experiments, The British Journal of Educational Technology, 34, 3, pp367-371.

Mitra, S., The Hole In The Wall, Dataquest, September 23 (2004),
<http://www.dqindia.com/content/industrymarket/2004/104092301.asp#interact>

MIE Users Manual (2003): Copyright Hole-in-the-wall Education Limited (HiWEL), NIIT Ltd. New Delhi, India. Contact www.niitholeinthewall.com

Papert, S. (1980). Mindstorms: Children, Microcomputers and powerful ideas. New York Basic Books.

Wullenweber, Walter, (2001), Das loch in der wand, Stern Magazine, No. 42, October 11, pp 97-102.